



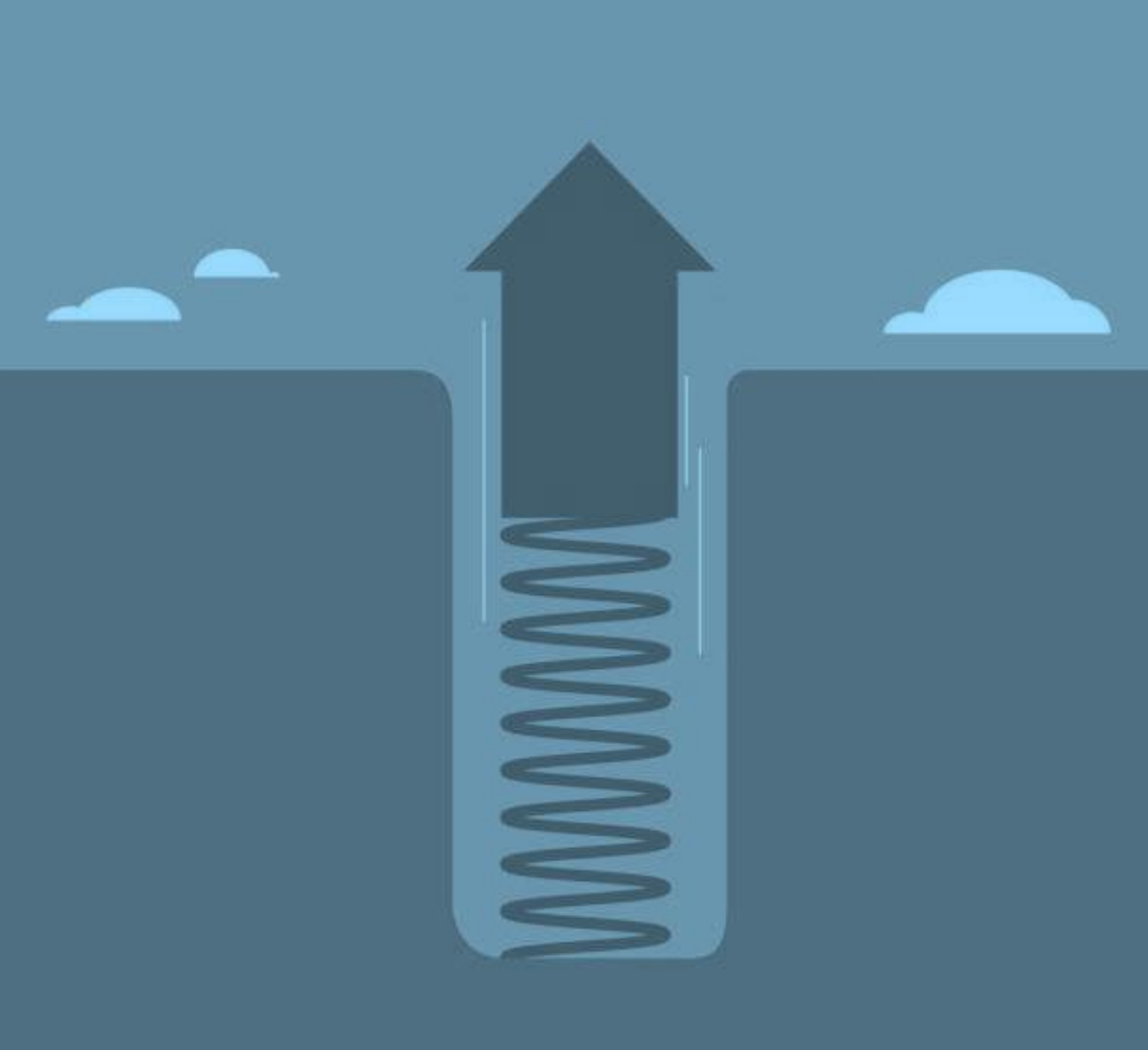
# Network for Social-Ecological Resilience SECORES

## Introduction to social-ecological resilience

---

CONFERENCE EDUCAID

21 OCTOBER 2022



What is  
social-  
ecological  
resilience?

# Social-ecological **resilience**

---

**Resilience** ... is the ability to cope with change and continue to develop (*source: Stockholm Resilience Centre*)



*"Resilience means that a system can recover from and/or adapt to (sudden) changes."*



# Social-**ecological** resilience

**Ecosystem**... is a dynamic entity of plant, animal and micro-organism communities and their non-living environment interacting as a functional unit (*Source: Convention on Biological Diversity*)



# Social-ecological resilience

---

**Ecosystem services** ... are the benefits that people derive from ecosystems

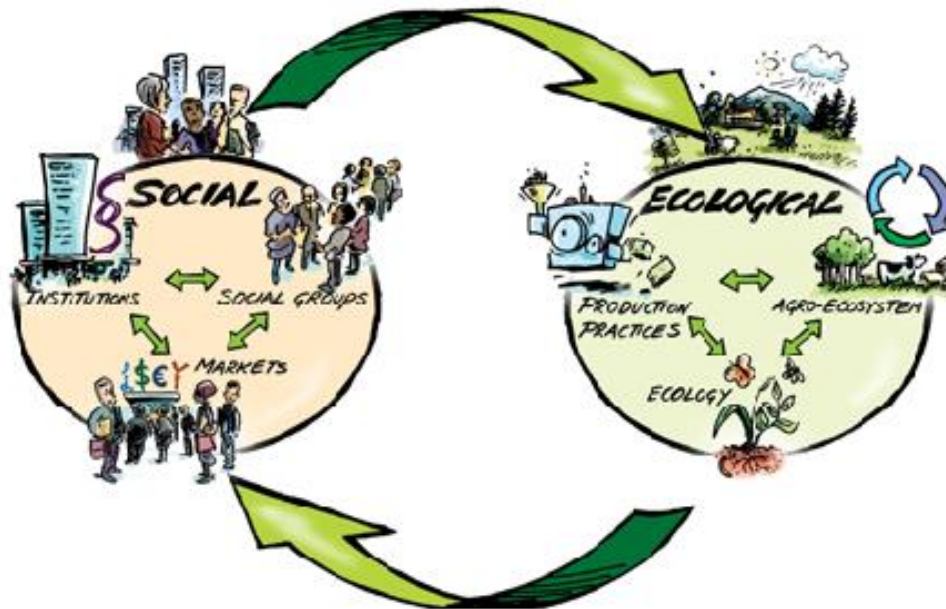
- Regulatory (or support and regulatory) services
- Supply services (material)
- Cultural services (non-material)

## Link to human well-being

- Nature's contribution to people
- Indigenous and local knowledge and cultural services at the centre of people-nature connections
- Link to 'One Health' approach

# Social-ecological resilience

... is the ability to adapt or transform in the face of **changes** in social-ecological systems (...), so as to continue to support human well-being (*Source: Folke et al (2016) in Ecology and Society, Vol 21 No 3*)



Darnhofer et al. (2016) The  
resilience of family farms:  
Towards a relational approach

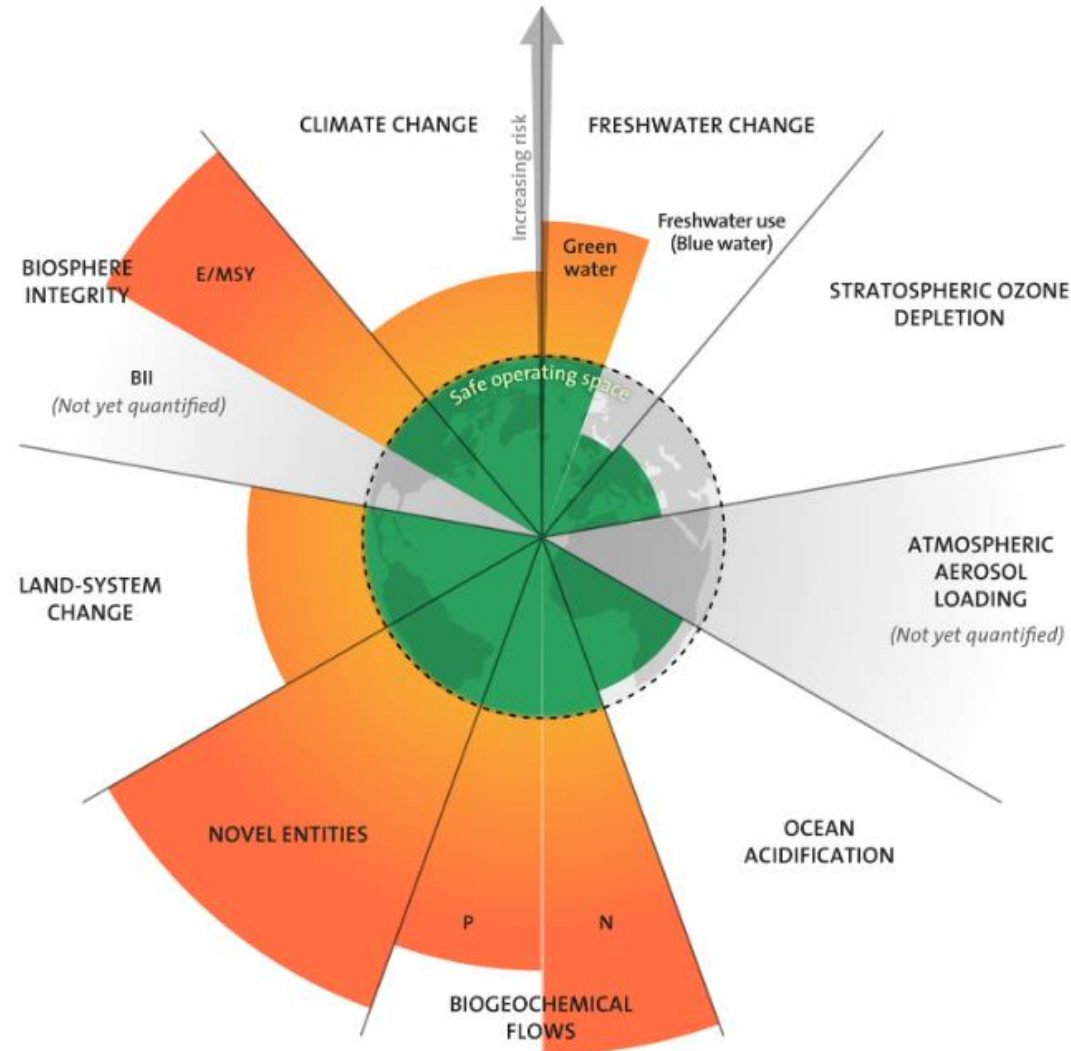


Why?

# Planetary boundaries

9 areas ...

Crossing these boundaries increases the risk of generating large-scale abrupt or irreversible environmental changes.



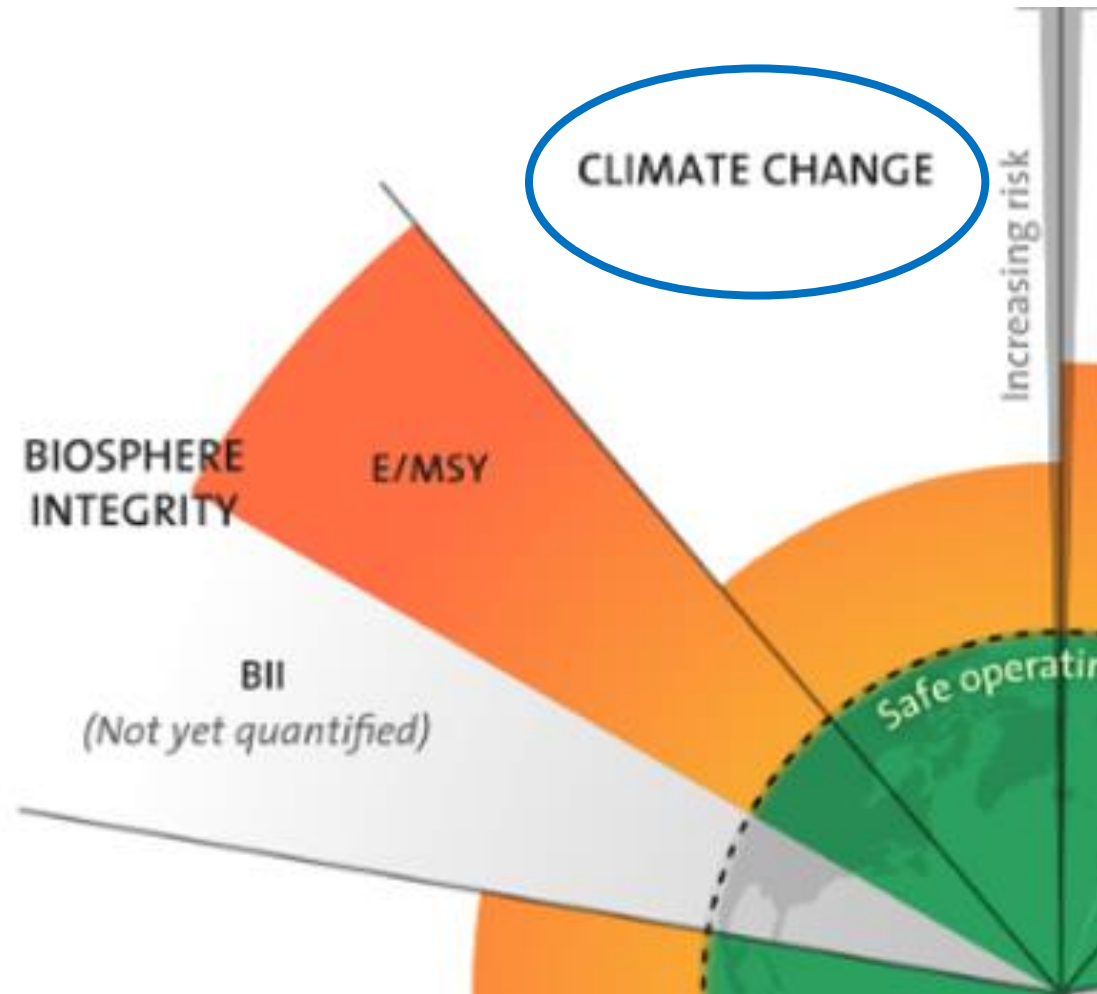
... of which 6 exceeded the limit

Source: Stockholm Resilience Centre

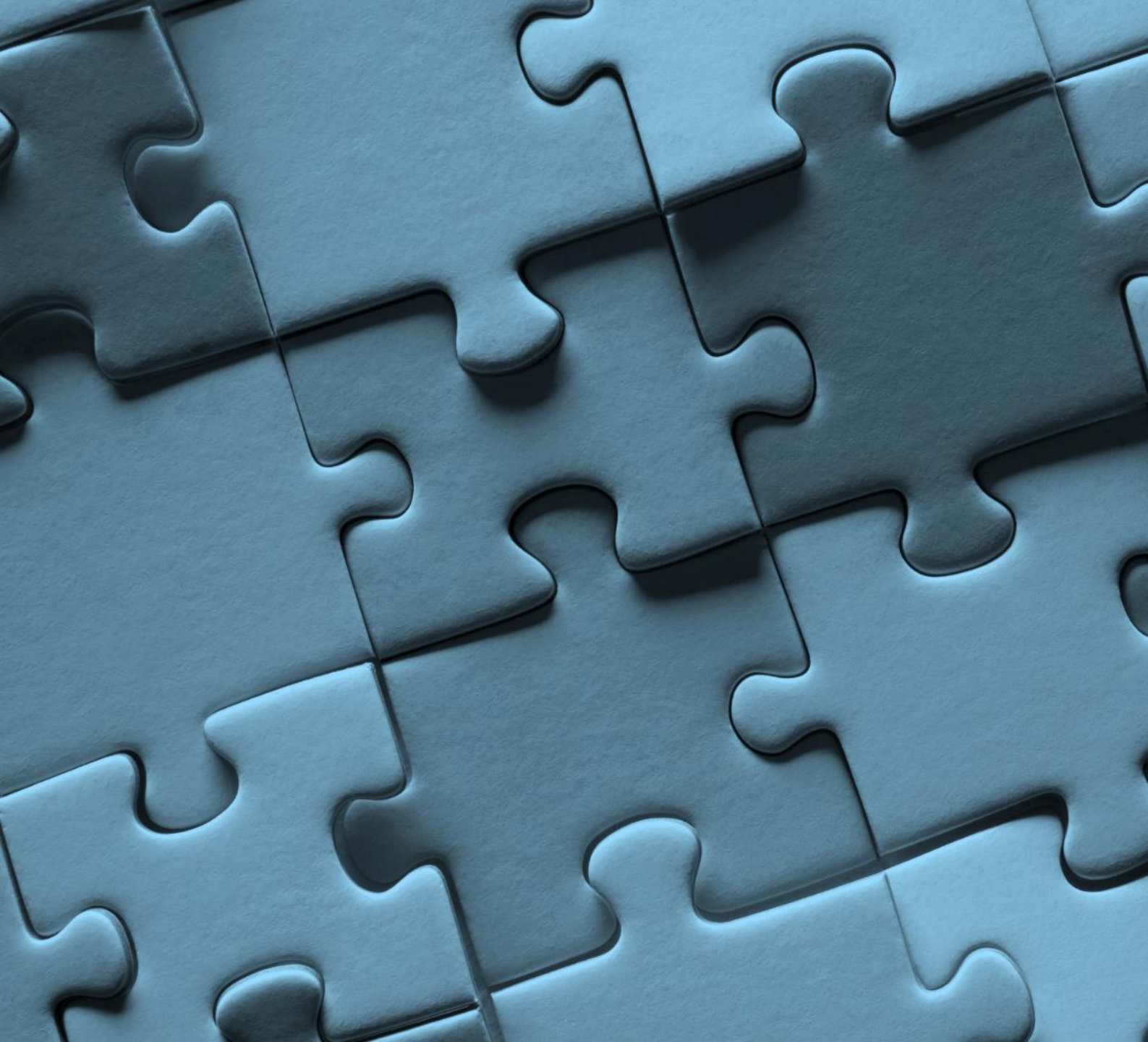


# Planetary boundaries

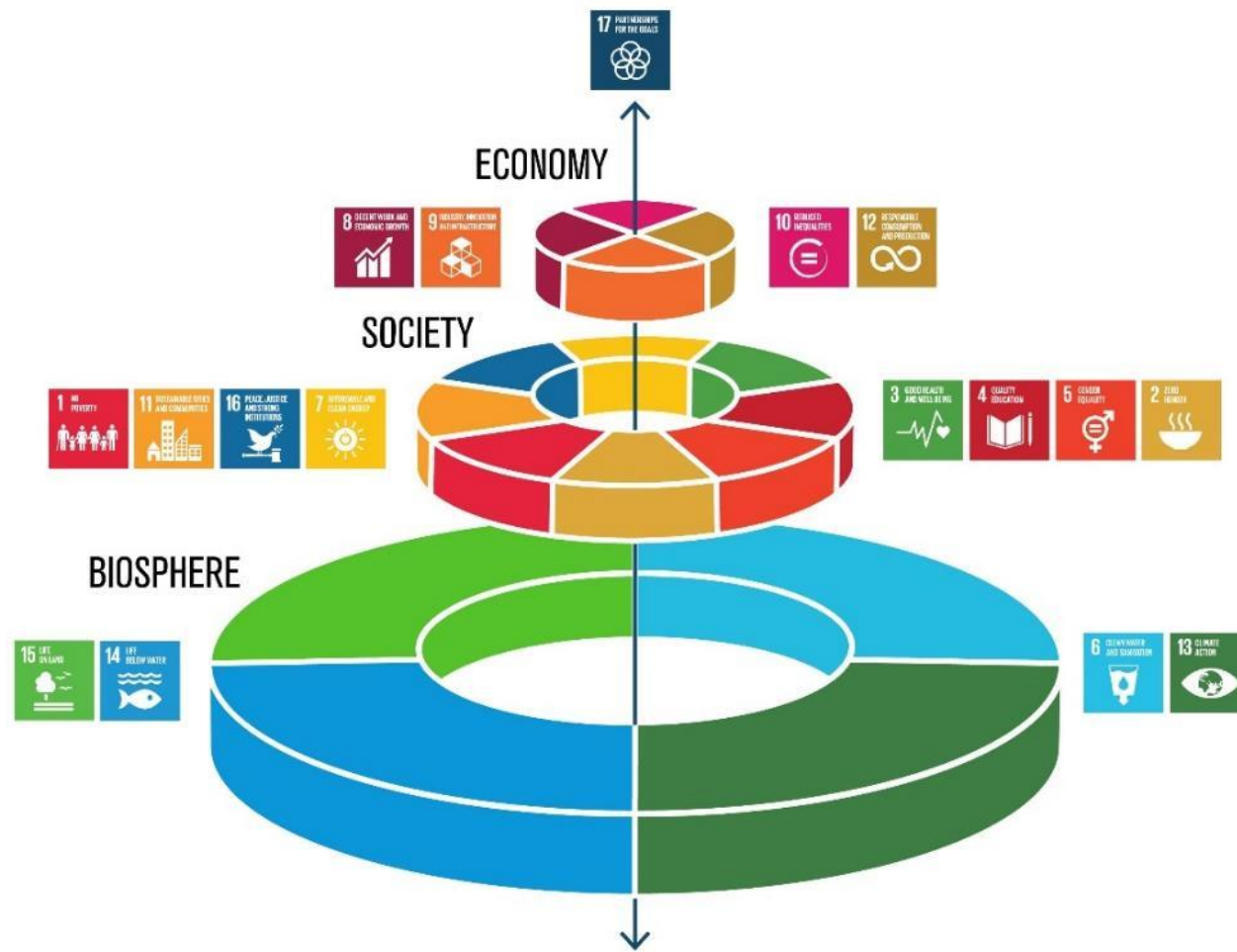
Climate change has a major impact on resilience and thus the well-being of communities, including education.



Source: Stockholm Resilience Centre



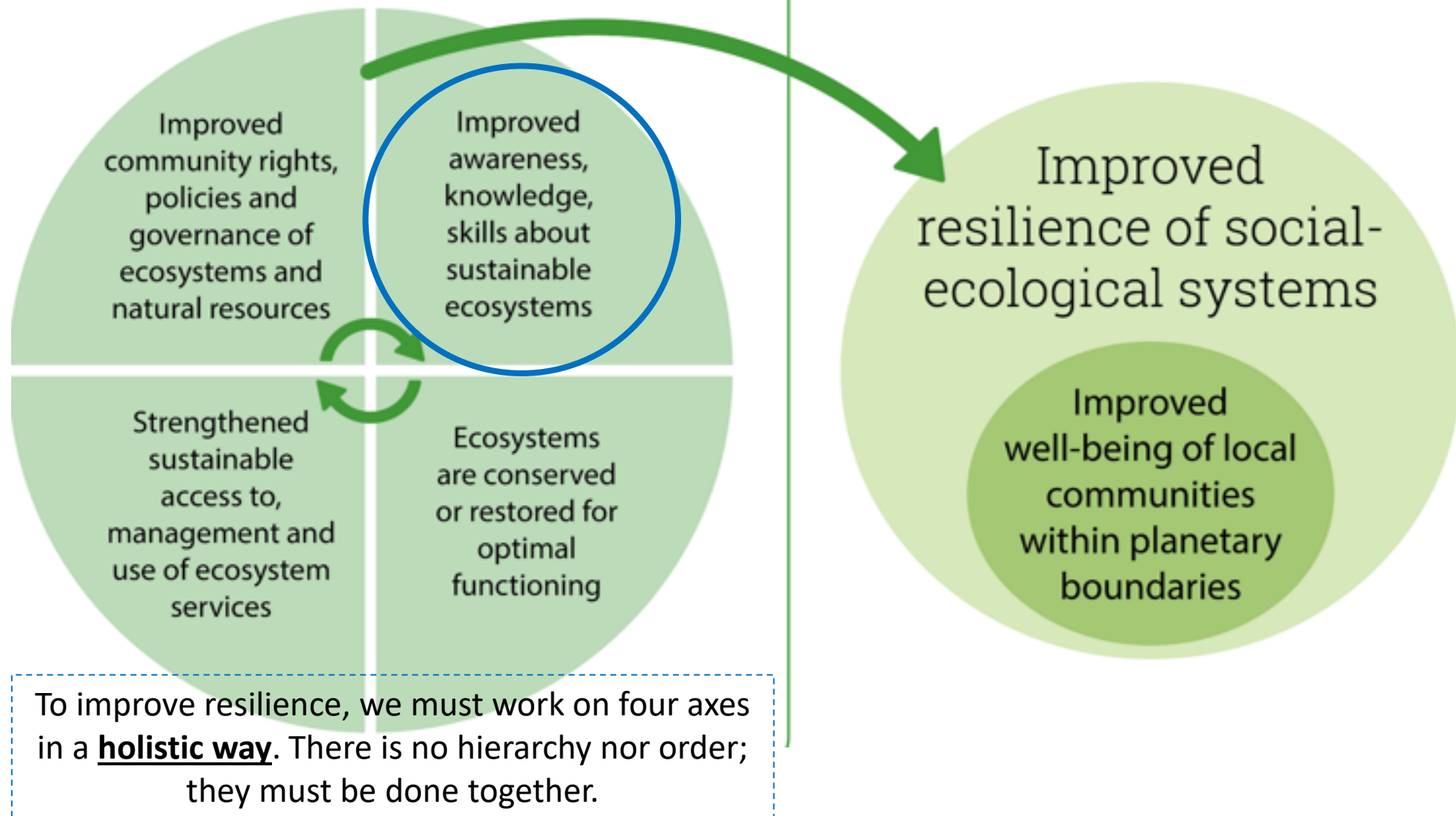
How do we  
aim to  
address  
this in the  
network  
SECORES?



Graphics by Inkeri Lönnqvist/Unesco

# Link to the SDGs

Education is one of the axes but should go hand in hand with the others, also around rights and policies → link to climate justice.





# Network for Social-Ecological Resilience SECORES



**Thank you!**

**For more information on social-ecological  
resilience, a 10-pager document is available**