

# Skills for Refugees and Host Communities in Northern Uganda



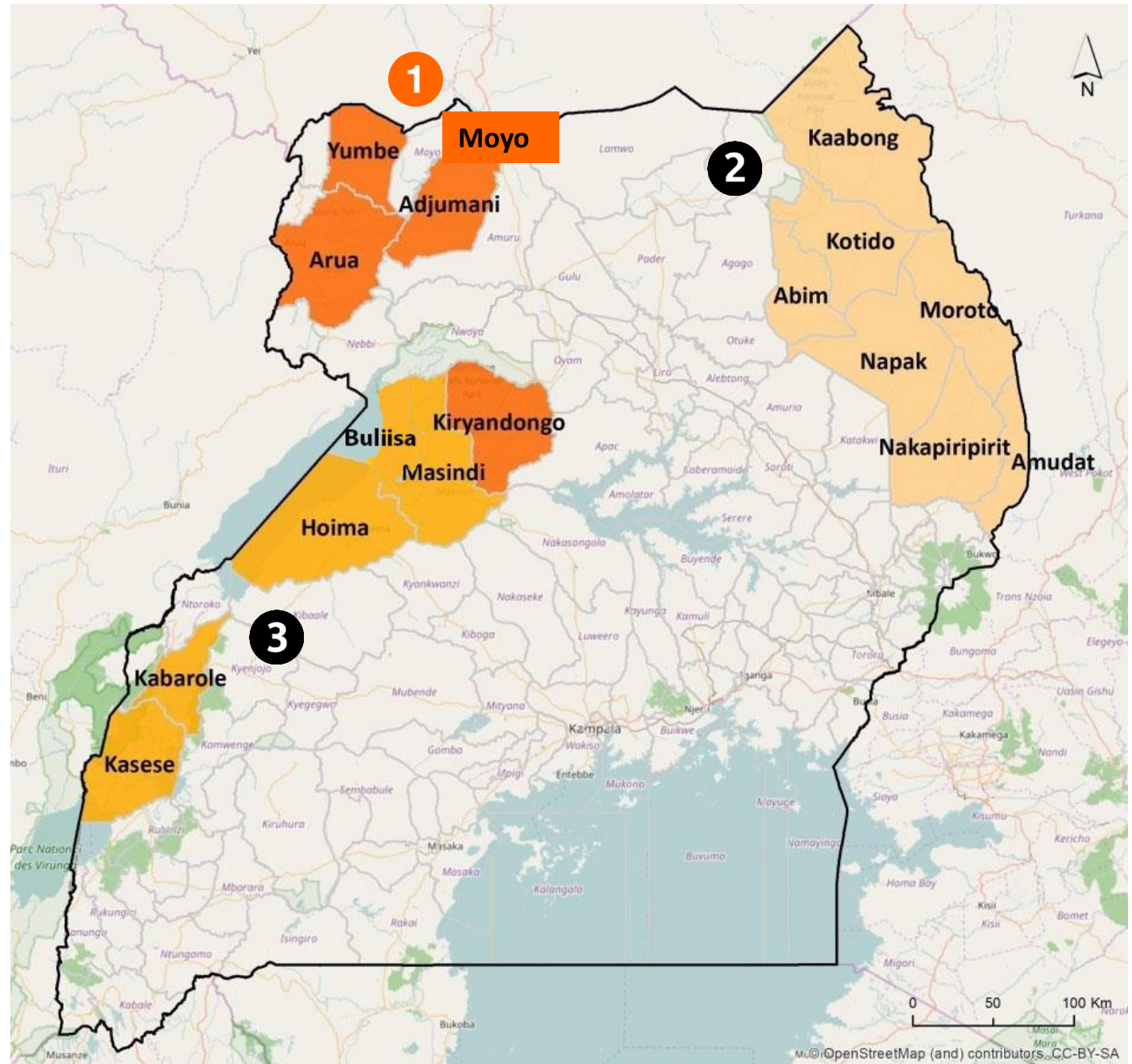
**Freda Bella Anek**, Skills Development Fund Manager, Enabel Uganda

# Context

In 2012, Uganda launched the vocational training reform: “Skilling Uganda”

Team Belgium (Enabel) supports “Skilling Uganda” in three different geographical areas:

1. Northern Uganda
2. Karamoja
3. Albertine Rwenzori

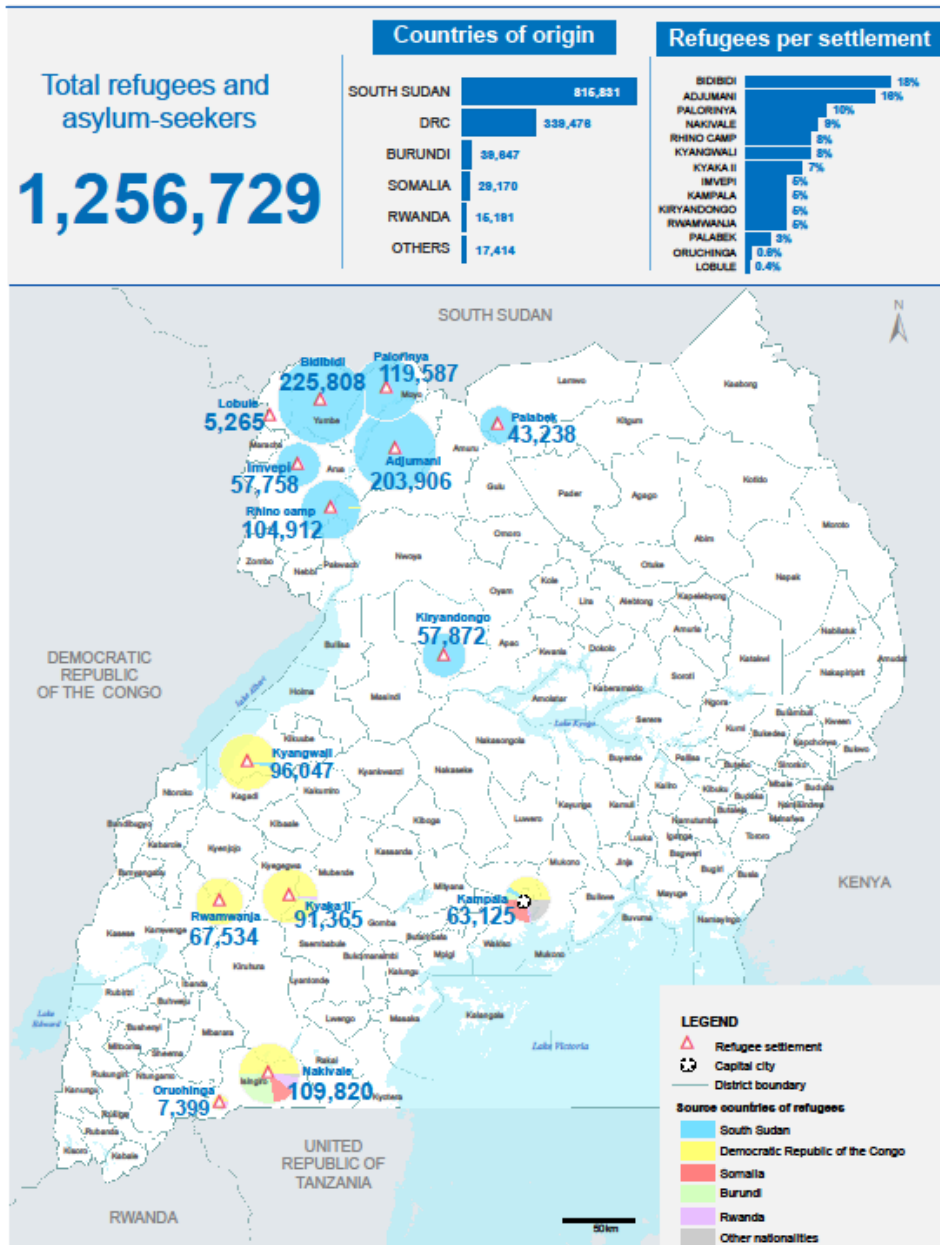




## Refugees and Asylum-Seekers in Uganda

Uganda Refugee Response

30 April 2019



## Northern Uganda

- 65% of refugees from South Sudan
- Hosting districts: underdeveloped economy

## European Union Emergency Trust Fund

→ Support Programme for Refugees Settlement in Northern Uganda (SPRS-NU)

- Refugees and host communities
- 7,500 people (2016-2021)
- 4.9 million € (EUTF)
- 2.6 million (GIZ)



# Objective

Skill  
refugees (70%)  
and host communities (30%)  
for jobs and improved livelihoods

→ 50 % - 50 %

# Key components

Based on **paradigm shift** of “Skilling Uganda”

- **Labour market relevant skills**
- **Flexible** skills development for better accessibility & higher quality
- **Public-Private partnership** & strong private sector involvement
  - Skills Development Fund
  - Skills development platforms in the districts
  - TVET Council



# What's new?

SPRS-NU is where humanitarian aid  
and structural development meet.

## “THE NEXUS”





# How do we do it?

## Skills Development Fund (SDF)

- Training provider / NGO and company jointly apply
- Promoting transferable technical skills, green skills, entrepreneurship, gender equality, equitable access...
- Apprenticeships
- Increase local training capacity

## Standardisation

- Formalised training packages
- Certification of skills

## Skills Development Platforms at district level

- Labour market information system
- Stimulate information exchange and dialogue

## Instant Training

- Adapted format for refugees + economic context
- Integrated in overall support by livelihood actor

## Sustainability

- SDF selection committee mirroring TVET council
- Tracing tools for feedback
- Policy feedback
- Guarantee value for money

## Visibility

# Challenges

## Mobility of refugees

- Cross-border
- Job opportunities in main cities

## Private sector buy-in into the fund

## Fragile economy

- Local context = limited formal employment



## Contacts

- Freda Bella Anek – [freda.anek@enabel.be](mailto:freda.anek@enabel.be)
- Jan Bijnsens – [jan.bijnsens@enabel.be](mailto:jan.bijnsens@enabel.be)
- Niels De Block – [niels.deblock@enabel.be](mailto:niels.deblock@enabel.be)

## Links

- Refugees and Asylum-seekers Map, April 2019 – <https://data2.unhcr.org/en/documents/details/69456>
- Support Programme for Refugee Settlements in Northern Uganda – <https://www.youtube.com/watch?v=drl4mA2omkY&t=195s>