



PAL NETWORK
People's Action for Learning

MEASURING PROGRESS TOWARDS ACHIEVING SDG4

*Contribution from the Citizen Led Assessments
Approach*

EDUCAID Conference
17th November, 2016 Brussels, BELGIUM

Sara Ruto
PAL Network Secretariat, Kenya

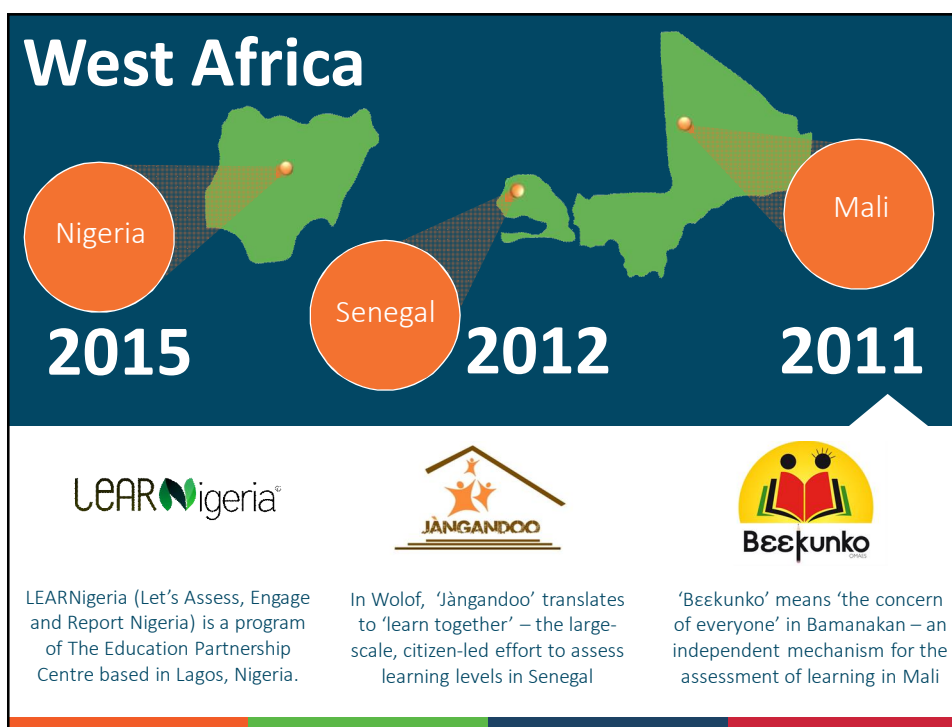
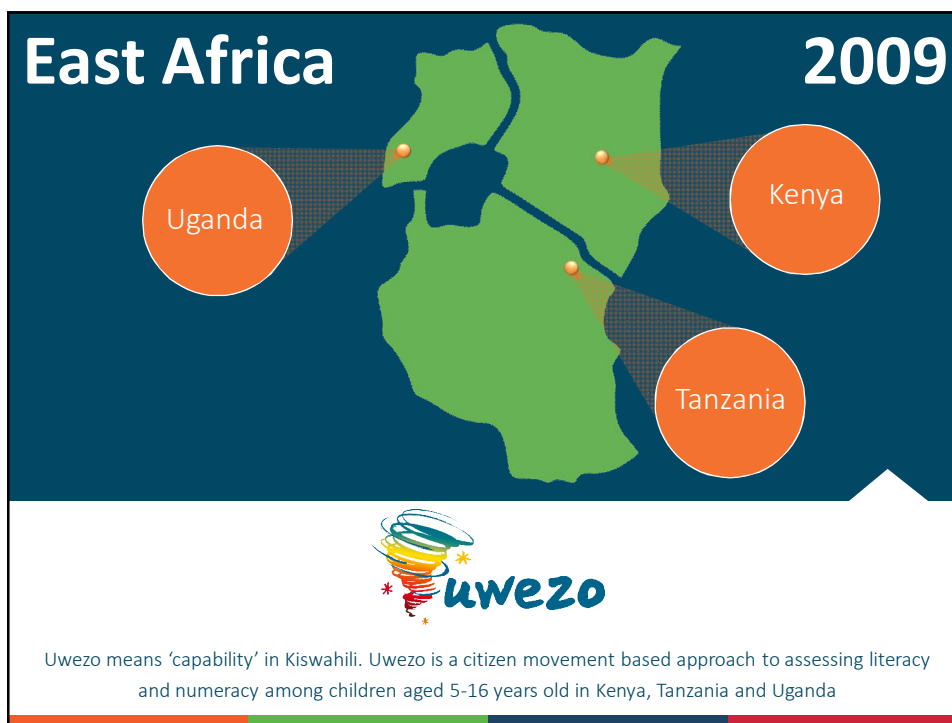


एक मिनट की स्मृति शक्ति को बढ़ाएं	
ककरो	चिड़िया
कलिया	काली कल
कलिया	कलिया
कलिया	कलिया
कलिया	कलिया
कलिया	कलिया
कलिया	कलिया

ORIGINS: INDIA 2005
‘from south to south’

**असर
ASER**
Evidence for Action





Latin America

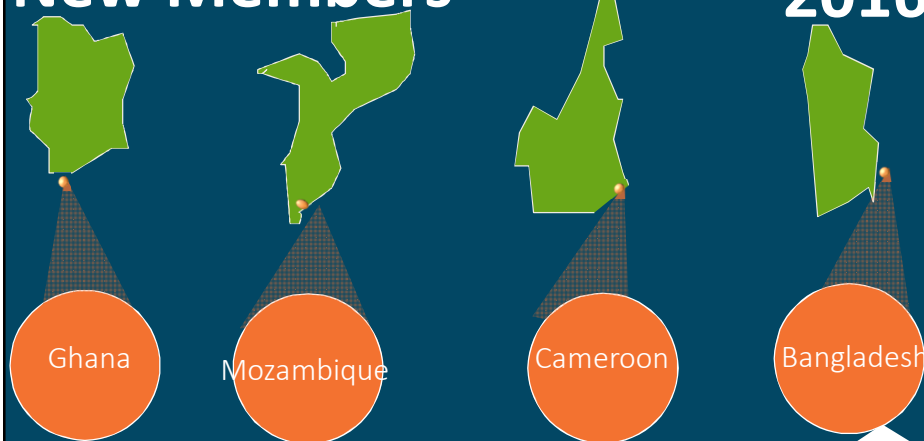
2014



'Medición Independiente de Aprendizajes' – or 'MIA' for short (meaning 'independent measurement of learning') was born in 2014 with the first pilot in the state of Veracruz.

New Members

2016



During the forth annual general meeting of the PAL Network, these 4 countries were granted provisional membership.

To support the growth, expansion and visibility
of the network of citizen-led assessments...

... the nine existing countries formed
The People's Action for Learning Network

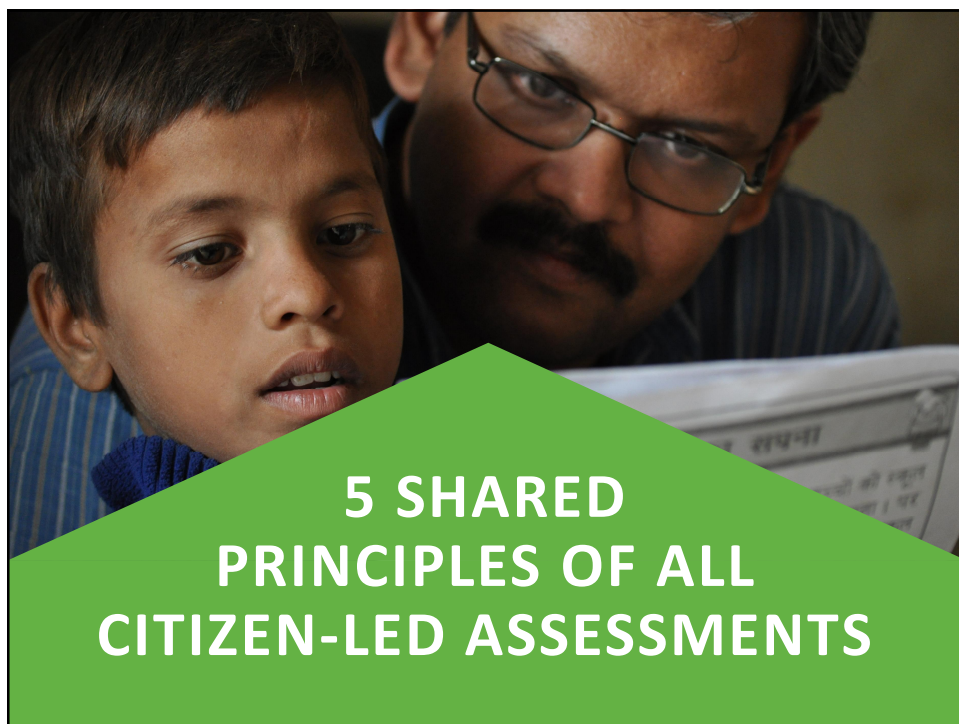


in 2015

3 years From JUBA to PAL

2016 13 Countries 3 Continents





5 SHARED PRINCIPLES OF ALL CITIZEN-LED ASSESSMENTS

What?

1a. We focus on the basics

WE DESIGN BASIC ASSESSMENTS IN FOUNDATIONAL SKILLS INCLUDING READING AND SIMPLE ARITHMETIC BASED ON NATIONAL CURRICULA EXPECTATIONS

1b. We assess children one to one

TRADITIONAL PEN-PAPER ASSESSMENTS DON'T GIVE A CLEAR PICTURE OF CHILDREN'S READING SKILLS. WE USE ORAL ONE-ON-ONE ASSESSMENTS, BECAUSE IT IS THE BEST WAY TO DETERMINE WHETHER A CHILD CAN READ.

When?

2a. We assess at regular intervals

ASSESSING CHILDREN AT REGULAR INTERVALS KEEPS THE PROBLEM VISIBLE, ALLOWS COMPARISON OF DATA OVER TIME, AND CREATES MOMENTUM

2b. We respond to local demands

MANY APPROACHES ARE CONCEIVED AND SUITABLE FOR DIFFERENT CONTEXTS. OUR ASSESSMENTS ARE INFORMED BY, AND RESPOND TO, THE REALITIES OF THE GLOBAL SOUTH.

Where?

3a. We assess in the households

THE BEST PLACE TO FIND A REPRESENTATIVE SAMPLE OF ALL CHILDREN IS IN THE HOUSEHOLD.

3b. We assess at scale

CONDUCTING THE ASSESSMENT ON A SCALE THAT IS NATIONALLY AND SUB-NATIONALLY REPRESENTATIVE ALLOWS COMPARISON WITHIN THE COUNTRY AND SPARKS NATIONWIDE DEBATE.

How?

4a. We ensure that we meet highest standards

OUR ASSESSMENTS ADHERE TO THE HIGHEST STANDARDS TO ENSURE THAT WE COLLECT ACCURATE EVIDENCE ABOUT CHILDREN'S LEARNING

4b. We make our data open and accessible to all

WE BELIEVE DATA ABOUT OUR CHILDREN'S LEARNING IS A GLOBAL ASSET THAT SHOULD BE OPEN AND ACCESSIBLE TO THE PUBLIC.

Who?

5a. We include citizens by using simple tools

CITIZENS FROM ALL WALKS OF LIFE CONDUCT THESE SIMPLE ASSESSMENTS TO UNDERSTAND THE PROBLEM FIRST-HAND.

5b. We communicate regularly to inform citizens and influence policy

EVIDENCE DOES NOT SPEAK FOR ITSELF. WE COMMUNICATE OUR FINDINGS REGULARLY TO SUSTAIN A CONVERSATION OVER TIME AND INFORM DECISION-MAKING AT ALL LEVELS.



How does this aid national
and global monitoring
efforts?

GOAL 4

Ensure inclusive and equitable quality education and promote lifelong learning opportunities for all



INDICATOR 4.1.1

Proportion of children in grades 2/3 achieving at least minimum proficiency level in reading and math

The Citizen led assessment approach and design allows it to track this indicator over time and across countries

FIRST OF ALL – What is citizen-generated data?

Citizen-generated data (CGD) is data that people or their organisations produce to directly monitor, demand or drive change on issues that affect them.

SECONDLY – How can this data help monitor progress towards achieving the SDGs?





Sample Tests from Kenya and India

support the growth, expansion and visibility
of the network of citizen-led assessments...

ENGLISH TEST - KENYA

Letters	Words	Paragraph
a u	day shop	Sara has one brother. His name is Tom. Tom is six years old. He is in class one.
m q	pet girl	
g c	eye road	

STORY

Peter and Mary live in Kitui. Kitui is a hot and sunny place. They always wear light clothes. They like playing in the sun. They are happy when it rains. Last year it rained a lot. They helped their father plant some trees. Mother planted maize and beans. There was a lot of food. Mother took some maize to the market. She sold it and got a lot of money. Mother used the money to buy shoes for us. We were all very happy.

Q1. Where does Peter live?
Q2. What did mother sell?

Story

Seema is a little girl. Her mother gave her a book. It had lots of stories and nice pictures. Seema reads it every morning on her way to school. She learned many words. Her teacher was very happy. The teacher gave Seema another book. It had more stories. She showed it to all her friends.

Para

I go to school by bus. The bus has four wheels. It has many windows. It is blue in colour.

Letters	Words
e d w	hand star
s c	bus
g h z	cat book
i q	day few
	old
	sing bold

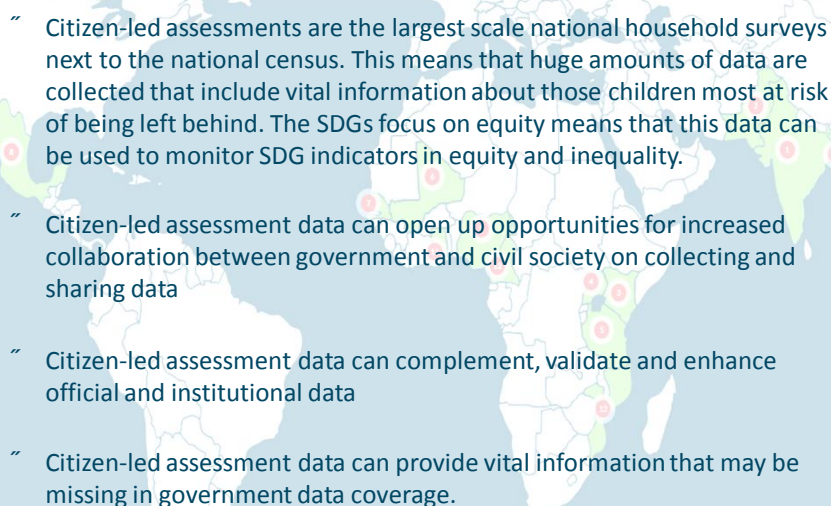
PAL NETWORK
People's Action for Learning



ACHIEVING THE SDGs REQUIRES ALL OF US

- 
- “ In order to achieve the Sustainable Development Goals by 2030, everybody needs to take part. If only the elite actors (government, global civil society, UN agencies, and others) are aware of what we are trying to achieve, we'll never achieve it. Ordinary citizens must be included.
 - “ Citizen-generated data allows citizens to see the problem first hand, giving them a way and a tool to engage that may otherwise seem far away from them
 - “ Citizen-led assessment data is the property of those citizens who collect it. PAL Network members are committed to the principle of open data so that citizens everywhere can use up-to-date information to inform and inform their actions.

MORE AND BETTER DATA IS REQUIRED

- 
- “ Citizen-led assessments are the largest scale national household surveys next to the national census. This means that huge amounts of data are collected that include vital information about those children most at risk of being left behind. The SDGs focus on equity means that this data can be used to monitor SDG indicators in equity and inequality.
 - “ Citizen-led assessment data can open up opportunities for increased collaboration between government and civil society on collecting and sharing data
 - “ Citizen-led assessment data can complement, validate and enhance official and institutional data
 - “ Citizen-led assessment data can provide vital information that may be missing in government data coverage.



www.palnetwork.org

